



Recycled Planter Boxes

By Jack and Sylvia Perrin of Gorge Maker Space

Tools Needed:

Hand Saw

Drill

Drill Bits: 1/8 and 1" Square

Hammer

Pencil

Tape Measure

Materials:

30 decking screws, 1 1/2 inch 4d finish nails (20)

Wood Glue

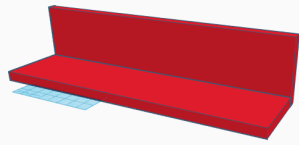
Wood Pieces (recycled, preferable cedar) 3/4" Thick:

3 pieces: 24" x 5.5" (bottom and sides) 2 pieces 7" x 5.5" (ends)

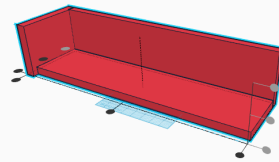
3/8" x 1.5" trim wood:

These will be in various length, see attached diagrams of the assembly for specific lengths and locations. It's easier to measure these to the exact dimensions of your project.

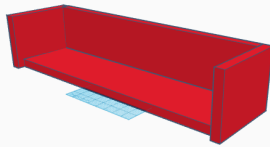
Assembly Instructions



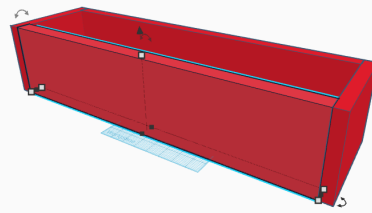
1. Attach the back to the bottom piece with glue and decking screws (pre-drill the holes).



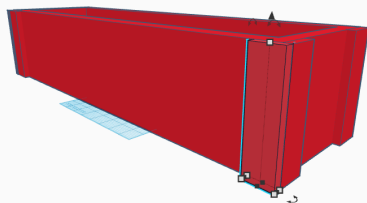
2. Attach one end piece with glue and decking screws (pre-drill the holes)..



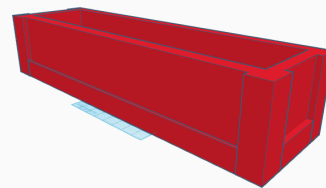
3. Attach the other end. piece with glue and decking screws (pre-drill the holes)..



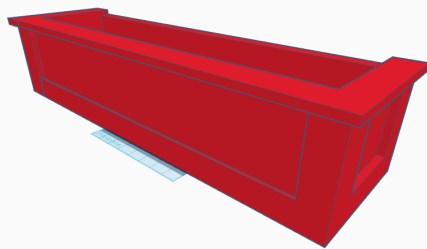
4. Attach the front piece with glue and decking screws (pre-drill the holes).



5. Attach the vertical pieces of trim on the corners with finish nails and glue.



6. Attach the horizontal pieces of trim with finish nails and glue.



7. Attach the top pieces of trim with finish nails and glue.